

www.manipal.edu/blr

Manipal Academy of Higher Education (MAHE)
(Institution of Eminence Deemed to be University)
Govindapura, Yelahanka, Bengaluru 560064,
Karnataka, India



mahe_bengaluru



mahebengaluru



mahe bengaluru



mahe_bengaluru



Manipal Academy of Higher Education, Bengaluru



Be the voice

Department of
Liberal Arts,
Humanities and
Social Sciences
(DLHS B'LRU)



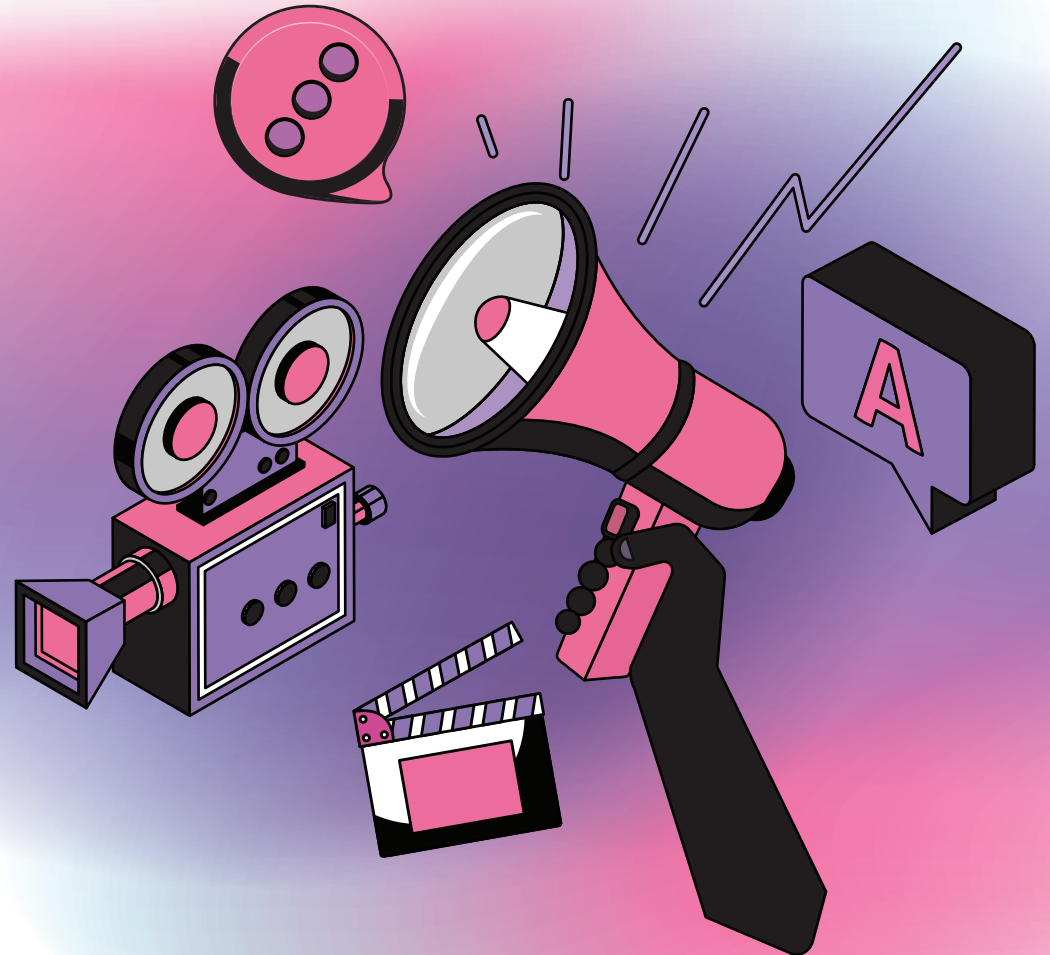
MANIPAL
ACADEMY of HIGHER EDUCATION
BENGALURU CAMPUS
(Institution of Eminence Deemed to be University)



EXPLORE LIBERAL ARTS, HUMANITIES, AND SOCIAL SCIENCES

The Department of Liberal Arts, Humanities, and Social Sciences (DLHS B'LRU), aims to nurture future global citizens with the innate ability to address prominent social, economic, and structural problems challenging human civilisation today.

#YouBelongHere



CREATE A NEW NARRATIVE

The Department of Liberal Arts, Humanities, and Social Sciences (DLHS) at the Bengaluru Campus equips students with topical clarity, analytical and introspective skills, life skills, and the ability to communicate effectively through a transdisciplinary approach grounded in critical thinking. The objective is to create well-rounded individuals who can take on the world with confidence and make it a better place.

MAHE B'LRU

PROGRAMMES AT A GLANCE

The Department offers a plethora of relevant Undergraduate (UG), Postgraduate (PG) and Doctoral Programmes in different disciplines within the larger domain of Liberal Arts, Humanities, and Social Sciences.

SINGLE-MAJOR UG DEGREE PROGRAMMES

Bachelors of Arts (B.A.)/(B.A. Honours)

English
Journalism and Mass
Communication
Psychology

DOUBLE-MAJORS UG DEGREE PROGRAMMES

Bachelors of Arts (B.A.)/(B.A. Honours)

History
Political Science
Economics
Sociology

PG DEGREE PROGRAMMES

Master of Arts (M.A.)

English Language and Literature
Multimedia and Communication

Master of Science (M.Sc.)

Applied Psychology

DOCTORAL PROGRAMMES

Media and Communication
English Language and Literature
Philosophy and Applied Sanskrit
Film Studies
Psychology
Economics
Sociology

EMBRACE THE TAPESTRY OF KNOWLEDGE

Explore Innovative Learning models

**Blended Collaborative
and Cooperative
Learning**

**Gamified Experiential
learning**

**Multi-literacies and
discussion-based
teaching**

Social justice pedagogy

**Flipped classroom
pedagogy**

**Art Integrated Learning
Pedagogy**

Project-based Learning

Simulated Learning



DLHS B'LRU isn't a single thread but a vibrant tapestry woven from diverse disciplines. Each course's distinct hue contributes to a comprehensive understanding of the human tapestry. With a multidisciplinary, interdisciplinary and transdisciplinary curriculum, offering specializations and electives with niche career-oriented courses, state-of-the-art infrastructure, dynamic pedagogy to cater to evolving global realities, industry and institutional collaborations, well-qualified faculty and researchers, lots of student-centric activities – clubs, committees and events, besides internationalization opportunities, DLHS B'LRU welcomes you to a tapestry of knowledge.

WHY CHOOSE US

Dive into the depths of human experience, challenge your assumptions, and discover who you truly are!

Choosing the Department of Liberal Arts, Humanities and Social Sciences opens doors to a world of intellectual exploration, critical thinking, and societal impact. By embracing a variety of disciplines, we foster a comprehensive understanding of the human experience, preparing you for a diverse range of career paths. The Curriculum emphasises a global perspective by engaging you with diverse cultures, historical contexts, and contemporary issues, promoting cultural competence and a broader worldview. This is an opportunity for you to engage with brilliant faculty, diverse peers, and lifelong mentors who inspire and support your journey.



Unique programmes with industry-specific specialisations



Industry immersion experiences through Internships, Capstone Project



Vibrant campus culture



Diversity and inclusion at the core



Student-centric activities



Industry-connect activities



Innovation and knowledge exchange platforms



Passionate educators who inspire success



A team dedicated to student success and lifelong learning



Professional development opportunities



Career exploration initiatives



Skills and networking workshops

ASSESSMENT AND EXAMINATION

“A liberal arts education enables one to truly develop both sides of the brain—the creative and analytical side,”

- National Education Policy (NEP) 2020 document.



An Outcome-Based Education approach

DLHS adopts a Continuous Assessment and Grading Pattern (CAGP) where student learning is evaluated throughout the semester. Formative Assessments serve as internal examinations, and Summative Assessments function as End-semester examinations across all courses.

Formative Assessments (50%)

These internal assessments happen regularly throughout the semester and focus on understanding and application of knowledge. They can take various forms like quizzes, debates, class activities, projects, and presentations, etc. These assessments provide ongoing feedback and opportunities for learning improvement.

Summative Assessments (50%)

These end-of-semester exams assess overall mastery of course content and learning outcomes. They can involve essays, term papers, Projects, Practical Exams and End-term Examinations. The focus is on demonstrating higher-order thinking skills like analysis, synthesis, and evaluation

What makes our assessments unique?

Comprehensive & Dynamic: Learning is ongoing, not just final exams.

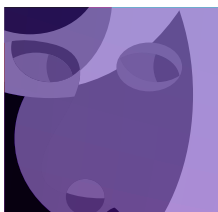
Creative & beyond paper: diverse assessment formats

In-depth Learning Outcome Analysis

Skills beyond knowledge: Think critically, solve problems, communicate effectively.

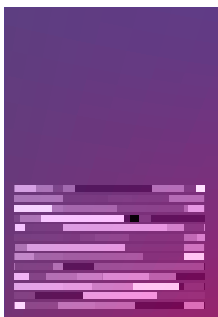
Higher-order thinking: Encourages analysis, synthesis, and evaluation

STUDENT CLUBS AT DLHS B'LRU



Speakeasy

A Gender and Sexuality Club was ideated with the vision to establish a student-led group that furthers conversations around gender identities, sexualities, and anything that goes against heteronormativity.



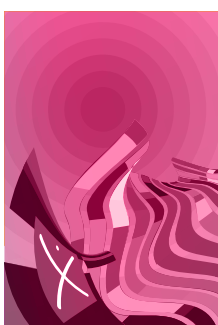
LitLounge

It aims to discuss and understand literature in terms of books, movies, art and much more. The Club conducts events and club meetings that encourage students to think and express themselves in a creative way.



Communiqué

This dynamic student-run media club is your passport to the thrilling world of media and communication! The mission is simple yet powerful: ignite a fiery passion for all things media, equip you with top-notch journalistic skills, unleash your creativity, and keep you plugged into the pulse of campus life.



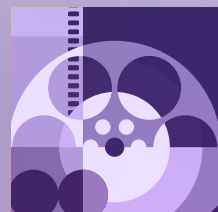
Pink Freud

The club offers students a platform to express and exchange ideas freely. Its aim is to foster an intellectual and social environment for discussing issues related to the discipline of Psychology, raising awareness, and enabling students to explore their personalities. The club empowers students to contribute meaningfully through creative expression, sparking positive change in the community.



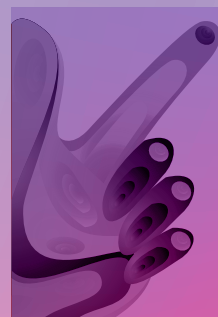
EcoSpire

Dedicated to mitigating the effects of climate change and promoting climate conscious lifestyles.



Point of View

Dedicated to creating spaces where one can experience and discuss diverse films to encourage discourse around film theory, politics of gaze, impact on audiences, optics and portrayal, etc.



Samvaad

Operated by students, this debate society aspires to cultivate a culture of debating within the university. Its primary function involves facilitating open dialogues and deliberations on historically significant and contemporary issues.



Seranova

The purpose of the music club would be to make people happy, keep them entertained, and explore the various tastes people have in music.



Kalakrithi

The dance club aims to represent different cultures and diversity through the art of dancing, which will empower every member of the club and anyone outside the club. A major part of this club would be to present a sense of community and support, which would be done through vigorous teamwork and communal harmony.



Abhinaya

The world of acting is vast, the impact of films and theatrics in our society is more omnipresent than ever. The theatre club aims to tell stories through skits, street plays and various other formats to spread relevant social messages and to entertain and engage the audience. It also focus on interpreting and analysing Indian filmmakers and theatre artists

LEARN, GROW AND THRIVE

Why DLHS B'LRU

Our vision is to foster the discovery, diffusion, and application of knowledge, preparing students with holistic skillset to take on the world with confidence and make it a better place. All our programs are designed with several skill-based courses giving learners a global perspective with the ability to address prominent social, economic, and structural problems challenging human civilization today.



Disciplinary knowledge



Communication skills



Critical thinking



Problem solving



Analytical reasoning



Information/digital literacy



**Moral and ethical awareness/
reasoning**



Research-related skills

LEARN IN A NEW AGE CAMPUS



Infrastructure at DLHS B'LRU

The curriculum framework of all the programmes have been meticulously designed to meet the contemporary industry standards and is in consonance with the National Education Policy 2020 (NEP 2020). The campus houses multiple labs, studios and resources to fully support student's experiential learning.



Psychology Labs



Counselling Labs



Broadcast Studio

Newsroom, Chroma Studio, Podcast Studio, Editing Lab



Computer Lab



Library



Digital Resources

“

At DLHS, we see students as ambassadors of curiosity and change. Join us and embark on a journey of lifelong learning, global responsibility and personal fulfillment. At DLHS, you'll find mentors who challenge you, support you, and empower you to become the leader you were born to be!

Dr. Shilpa Kalyan
Associate Professor & HOD, DLHS B'LRU

”





The Manipal Academy of Higher Education, Bengaluru (MAHE B'LRU), is a vast and open flagship campus of MAHE (Institution of Eminence) in vibrant Bengaluru!

At MAHE B'LRU we transcend boundaries through experiential learning, embracing global perspectives, and championing sustainability. Our world-class campus is a testament to our commitment to fostering unique future-ready education experiences across disciplines.

We are redefining the learning continuum, by blending traditional and new learning practices, deep research, plus focus on innovation, leadership, and entrepreneurship. To equip the next generation of leaders with the mindset and tools to navigate and make a positive difference in this ever-changing world.



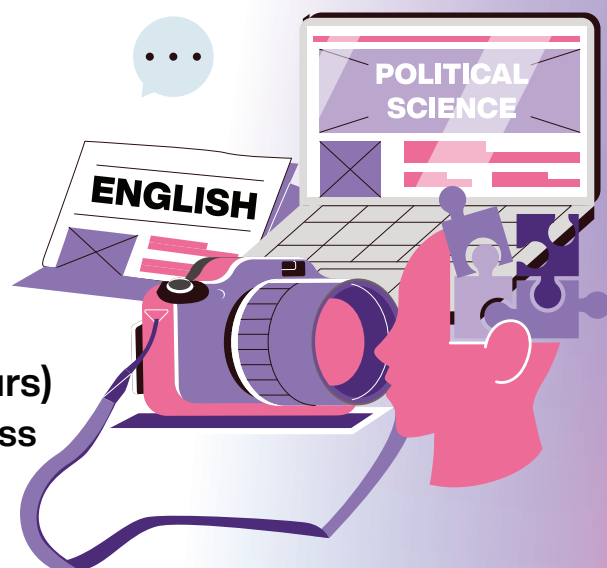
SCAN & APPLY

+91 74117 47070 / + 91 98808 39581
+91 93152 02230 / 080 24494100

admissions.maheblr@manipal.edu
rama.venkat@manipal.edu

UNDERGRADUATE PROGRAMME

BACHELOR OF ARTS (HONOURS)



Bachelor of Arts (B.A.)/(B.A. Honours) Journalism and Mass Communication

SPECIALIZATION TRACKS

Multimedia Journalism
Marketing Communication
Audio-Visual Production
Film Studies

Bachelor of Arts (B.A.)/(B.A. Honours) Psychology

SPECIALIZATION TRACKS

Clinical Psychology
Organisational Psychology
Integrated Psychology

Bachelor of Arts (B.A.)/(B.A. Honours) English

SPECIALIZATION TRACKS

Language and Linguistics
Literature and Literary Studies
Industry-oriented track

BA (Double Major with Honours)

Economics
Political Science
Sociology
History

COURSE DURATION

4 Years
(Bachelor of Arts with Honours)
3 Years
(Bachelor of Arts)

STUDENT IN-TAKE

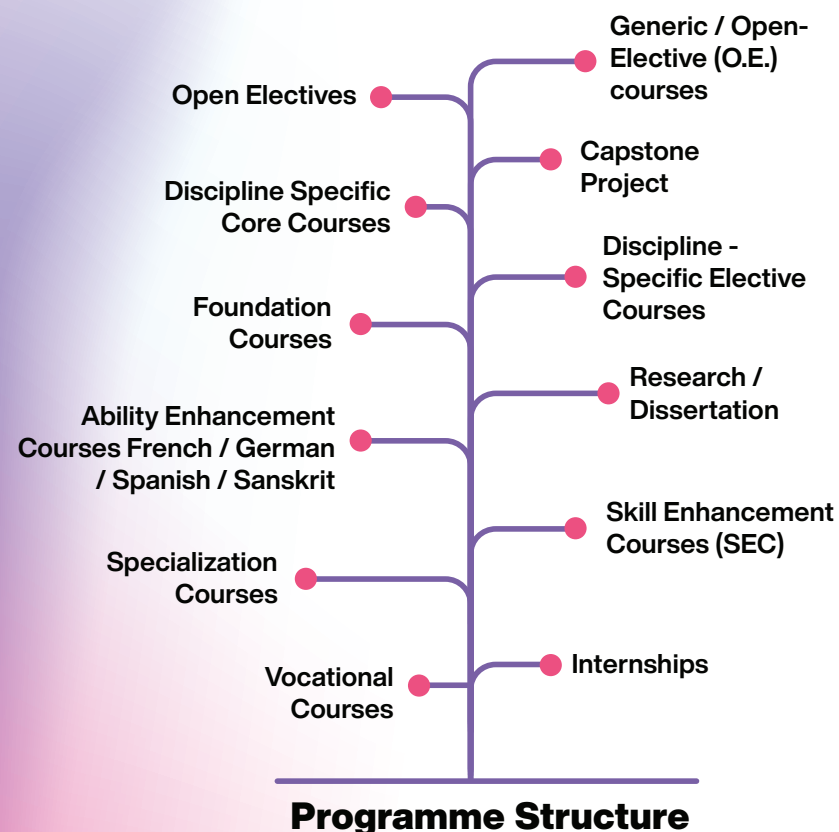
30 per programme

ELIGIBILITY

Citizenship: Indian nationals can apply under the General Category. Foreign nationals, Non-Resident Indians, or Indian nationals supported by NRI relatives can apply under the Foreign /NRI Category

QUALIFICATION

Pass in 10+2 or equivalent from a recognised board from any stream, with a minimum of 55% aggregate marks or equivalent



ADMISSION PROCESS FOR UG PROGRAMMES

Apply online

Personal Interview

Provisional Admission notice to shortlisted candidates

Admission formalities



Explore Our Curriculum

PROGRAMME FEE

Bachelor of Arts (B.A.) / (B.A. Honours) Journalism and Mass Communication
Registration Fee Rs 10,000/ US \$100
Rs 1,38,000 per year /US \$1900 per year

Bachelor of Arts (B.A.) / (B.A. Honours) Psychology
Registration Fee Rs 10,000/ US \$200
Rs 1,50,000 per year /US \$3100 per year

Bachelor of Arts (B.A.) / (B.A. Honours) English
Registration Fee Rs 10,000/ US \$100
Rs 1,10,000 per year /US \$1700 per year

BA (Double Major with Honours)
Registration Fee Rs 10,000/ US \$100
Rs 1,10,000 per year /US \$1700 per year

POST-GRADUATE PROGRAMME MASTER OF ARTS



MA Multimedia and Communication

SPECIALIZATION TRACKS

Multimedia Journalism and
Communication
Marketing Communication
Audio-Visual Production

MA English Language and Literature

SPECIALIZATION TRACKS

Language and Linguistics
Literature and Literary Studies
Praxis (Industry-oriented track)

COURSE DURATION

2 Years (4 Semesters)

STUDENT IN-TAKE

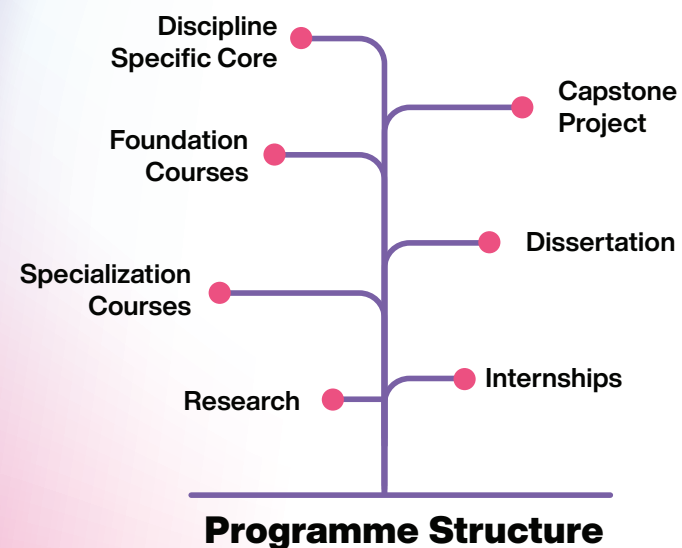
30 per programme

ELIGIBILITY

Citizenship: Indian nationals can apply under the General Category. Foreign nationals, Non-Resident Indians, or Indian nationals supported by NRI relatives can apply under the Foreign /NRI Category

QUALIFICATION

Candidates who have passed the Undergraduate degree examination with 55 % aggregate marks from any recognised University in India or abroad recognised by UGC are eligible to apply



ADMISSION PROCESS FOR PG PROGRAMMES

Apply online

Personal Interview

**Provisional Admission
notice to shortlisted
candidates**

Admission formalities

PROGRAMME FEE

MA

Multimedia and Communication

Rs 5,000 / US \$100

Rs 1,50,000 per year / US \$1300 per year

MA

English Language and Literature

Registration fee – Rs 5,000 / US \$100

Rs 75,000 per year / US \$1200 per year



Explore Our Curriculum

POST-GRADUATE PROGRAMME MASTER OF SCIENCE



COURSE DURATION

2 Years (4 Semesters)

STUDENT IN-TAKE

30

ELIGIBILITY

Citizenship: Indian nationals can apply under the General Category. Foreign nationals, Non-Resident Indians, or Indian nationals supported by NRI relatives can apply under the Foreign /NRI Category

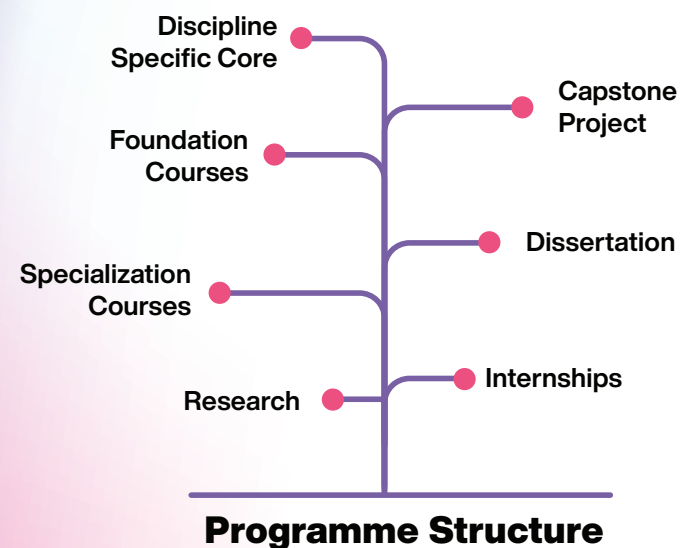
QUALIFICATION

Pass in 10+2 or equivalent from a recognized board from any stream, with a BA/BSc Degree in Psychology with a minimum of 55% aggregate marks or equivalent

M.Sc Applied Psychology

SPECIALIZATION TRACKS

Clinical Psychology
Organisational Psychology
Forensic Psychology



ADMISSION PROCESS FOR PG PROGRAMME

Apply online

Personal Interview

Provisional Admission notice to shortlisted candidates

Admission formalities



Explore Our Curriculum

PROGRAMME FEE

Registration fee
Rs 10,000 /US \$200
Rs 1,75,000 per year
/US \$3500 per year

LEARN FROM THE BEST

Dr Amandeep Singh

Assistant Professor, Psychology

AREAS OF EXPERTISE

Suicide Prevention, Community Mental Health, Emotional Regulation, Counselling and Psychotherapy

Ms Ankita Singh

Assistant Professor, Psychology

AREAS OF EXPERTISE

Organizational Behaviour, Positive Psychology, Psychological Interventions, Entrepreneurship Psychology and Pro-environmental Behaviour

Dr Arjuna S R

Assistant Professor,
Sanskrit and Philosophy

AREAS OF EXPERTISE

Computational Linguistics, Indian Knowledge Systems, Sanskrit Computational Linguistics, Indian Philosophy, Indian Epics and Sanskrit language, Indian and Western Logic, programming, NLP and Translation Studies

Dr Anupama B N

Associate Professor,
English Language and Literature

AREAS OF EXPERTISE

American Literature, Diasporic writings, African American Literature and Afghan Literature

Dr Anushree K N

Assistant Professor, Economics

AREAS OF EXPERTISE

Public Economics and Agricultural Economics, Statistical Methods, Health Economics, Development Economics

Dr Arunima Dube Upadhyay

Associate Professor, Psychology

AREAS OF EXPERTISE

Clinical Psychology – Child & Adolescent, Diagnosis, Assessments & Therapy

Dr Divya Kalavala

Assistant Professor,
English Language and Literature

AREAS OF EXPERTISE

Translation Studies, Film Studies, Gender & Sexuality

Dr Girish N

Associate Professor,
English Language and Literature

AREAS OF EXPERTISE

Film Studies, Science Fiction, Literary / Cultural Theories, Linguistics and English Language Teaching

Dr Iswarya V

Assistant Professor, English Language & Literature

AREAS OF EXPERTISE

Contemporary British Drama, Consciousness Studies, Metatheatre and Dramatic Theory, Theatre and Philosophy

Ms Neeraja Sasikumar

Assistant Professor, English Language
and Literature

AREAS OF EXPERTISE

Performance Studies, Theatre Studies, Cultural Anthropology, Folklore, and Subaltern Studies

Dr Pradeep Thomas

Assistant Professor, Media, Mass
Communication and Political Science

AREAS OF EXPERTISE

Broadcast and Electronic Communication, Media Effects and Public Opinion Efficacy, Media use and Civic Participation, Presidential Debates, Political Advertising, Comparative Politics Media and Gender

Dr Pranava Kumar

Assistant Professor, Multimedia and
Visual Communication

AREAS OF EXPERTISE

Film Making, Broadcast Production, Electronic Media, Graphics & Animation

Ms Sumati Nagesh

Assistant Professor, English Language & Literature

AREAS OF EXPERTISE

Performance Studies/Theatre Studies, Gender and Sexuality Studies, Adaptation Theory and Practice, Folklores, Graphic Novels and Narratives, Visual Culture

Mr Rahul B N

Assistant Professor, Sociology

AREAS OF EXPERTISE

Applied Sociology, Women & Religion, Folk Religion, Ethnography, Religion & Society

Dr Sunayan Bhattacharjee

Associate Professor, Media and
Communication

AREAS OF EXPERTISE

Film Studies, Multimedia Reporting & Editing, Media Laws, Digital Media

Ms Varsha Malagi

Assistant Professor, Psychology

AREAS OF EXPERTISE

Cognitive Psychology, Positive Psychology, Counselling Psychology

Dr Swathi Shivanand

Assistant Professor, History,
Development Studies

AREAS OF EXPERTISE

Modern & Contemporary History, Urban Studies, Labour & Gender Studies, Development Studies, Media & Communication Studies

Mr Subash Chandra Rao

Assistant Professor, Multimedia and
Visual Communication

AREAS OF EXPERTISE

Photography, Television and documentary Production, Audio Production, Video Editing, Cinematography, Film Studies, Graphic Design, New Media, and Print Media Design

Dr Shilpa Kalyan

Head DLHS, Associate Professor,
Media and Communication

AREAS OF EXPERTISE

Marketing Communication, Media and Technology, Media Literacy, Public Relations, Broadcast Media, Digital Media.

